

Anti-Ligature Hardware

This range of furniture is intended for use in hospitals, care homes and establishments for vulnerable people where there is an increased risk of service users unintentionally harming themselves.

Please contact us before making your final furniture selection as client and site circumstances have a strong influence on the patterns that should be used.

It imperative that we are advised the door thickness(es) being used to enable the correct specification of profile escutcheon thicknesses and cylinder lengths for each door set. Door thickness will also affect the size of any bolt fixings.

Due to the complex nature of anti-ligature furniture specification please contact us to discuss your requirements on 023 9282 6067

Anti-ligature Hinges



SSHI 22.2412.2073

Triple knuckle concealed fix hinge

101.6x75.6mm

Grade 304 stainless steel

Type tested to BSEN1935 grade 13

Included in fire tests to BSEN1634

Certifire approved

Pivot sets as shown in Hinge section of our catalogue page 4–6 can be suitable in an anti ligature situation to provide double action or completely concealed hinging.

Door Closers:

see SSDC 99728 closer on page 3–5. Other options are available.

Anti-Ligature Hardware

Anti-ligature door furniture



SSAL 51.824.1

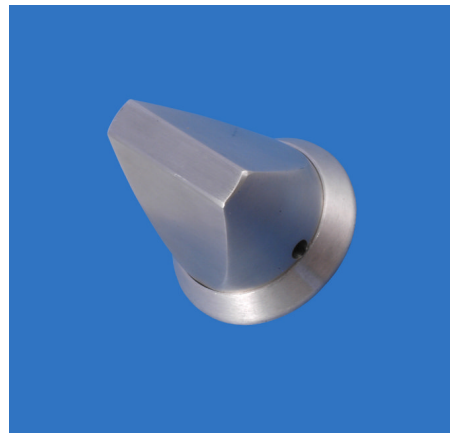
Anti-ligature single chamfer knob furniture
concealed bolt fix 50mm dia.
Option: available grooved for increased grip.

Finishes: Satin aluminium or Satin Stainless steel
or crinkle powder coated.

SSAL 51.824.6

Anti-ligature double chamfer knob furniture
concealed bolt fix 50mm dia.

Finishes: Satin aluminium or Satin Stainless steel
or crinkle powder coated.



SSAL 51.824.3510

Anti-ligature bathroom small thumb turn.

Available with out side slotted release

Finishes: Satin Aluminium or Satin Stainless
Steel

Anti-Ligature Hardware

SSAL 51.824.187

Lever on rounded rose concealed bolt fixing with tamper resistant fixings

Finishes: Satin aluminium or Satin Stainless steel or crinkle powder coated.



SSAL 51.824.763

Lever on chamfered rose concealed bolt fixing with tamper resistant fixings

Finishes: Satin aluminium or Satin Stainless steel or crinkle powder coated.

SSAL 51.824.19

A curved lever handle on rounded rose with concealed fixings patient side.

This lever is designed for the physically less able to be able to operate doors but resists the fixing of ligatures.

Finishes: Satin aluminium, Satin Stainless steel or crinkle powder coated.



Anti-Ligature Hardware

SSAL 51.824.350

50mm chamfered escutcheon. Fixings are available concealed patient side and tamper resistant bolt through from outside or face fixing

SSAL 51.824.350BL

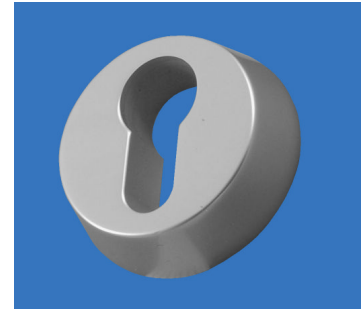
Blank escutcheon 50mm dia. Available face fix, bolt fix in pairs, or paired with europrofile escutcheon

SSAL 51.824.363

63mm chamfered escutcheon. Fixings are available concealed patient side and tamper resistant bolt through from outside or face fixing

SSAL 51.824.363BL

Blank escutcheon 63mm dia. Available face fix, bolt fix in pairs, or paired with europrofile escutcheon



SSAL 51.824.110

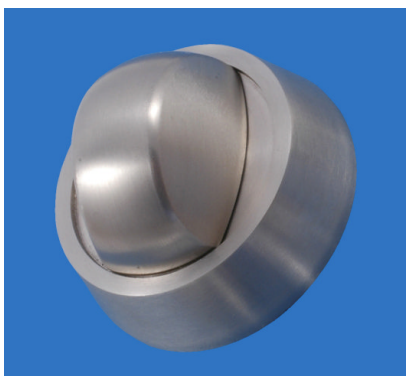
Bathroom indicator release with Double chamfered thumb turn.

Available with plain thumb turn or anti-barricading clutch thumb turn

Finishes: SAA or SSS

SSAL 51.824.161

Release key for bathroom indicator



SSAL 51.824.524

Bathroom indicator release with Rounded anti-barricading clutch thumb turn.

More suited for the infirm & weak.

Finishes: SAA or SSS

Anti-Ligature Hardware



SSAL 51.824.222

Pull handle 25mm dia on 265x75mm plate.

Optionally plate size can be made specification.

The handle can be supplied in face fix format shown in pairs back to back bolt through

Bolt fixed to finger plate

As pull handle on rose.

Finishes: SAA or SSS

SSAL 51.824.522

Pull handle 150x32mm on 190x65mm back plate

Optionally plate size can be made to specification

This handle can be used back to back by bolting the back plates together with tamper resistant bolts.

The handle has been designed to prevent barricading offering sufficient grip to allow the door to be pulled open but not enough to allow the door to be held closed.

Not recommended where a floor spring or door closer is in use.

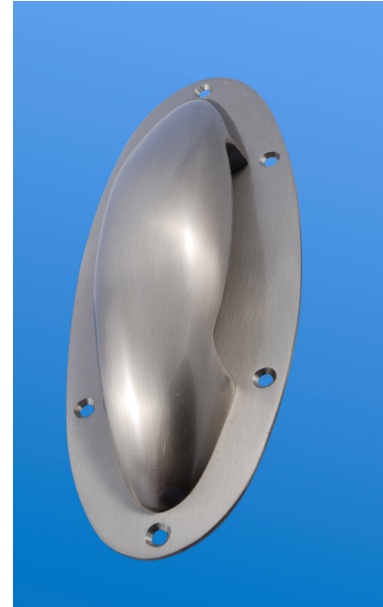
Finishes: SAA or SSS



Anti-Ligature Hardware

SSAL 51.824.1819

Pull handle on oval plate with smooth lines that discourage the attachment of ligatures. The 190mm handle can be fitted as a single pull or used in a back to back configuration. Finishes: PAA or Nickel plated. (similar to stainless steel)



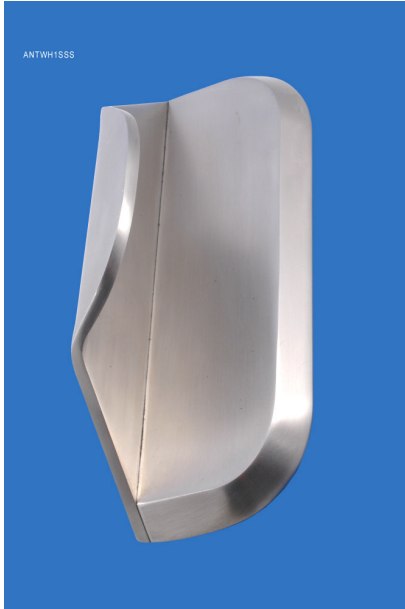
SSAL 51.824.300

Pull handle standard size 300mm long available in face fix, bolt fix and back to back bolt fix formats.

This handle is intended to provide sufficient grip to open large doors with door closing devices but with minimal opportunity to attach ligatures. The handle can be offered in bespoke lengths from 150mm to 2000mm to special order.

Finishes: SAA

Anti-Ligature Hardware



SSAL 51.824.220

Of similar design to the SSAL 51.824.300 this 200x63mm pull handle is manufactured from satin stainless steel. It is intended to provide sufficient grip to open large doors with door closing devices but with minimal opportunity to attach ligatures.

SSAL 51.824.1020

Finger pull handle available in two sizes 170x150mm or 150x105mm (shown)

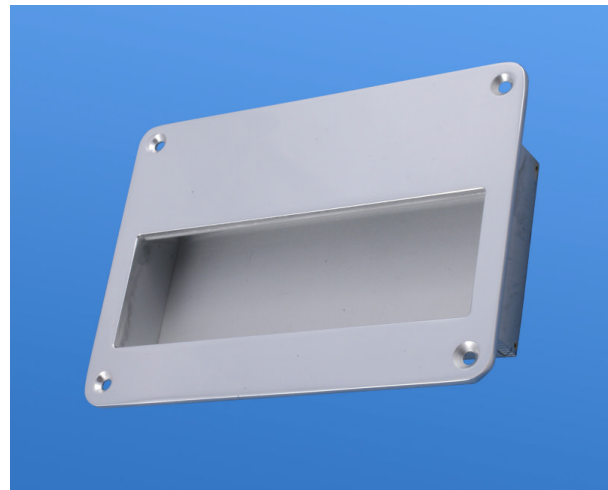
The inside of the grip is curved to restrict the successful insertion of a part to attach a ligature.

The pulls can be fitted vertically or horizontally.

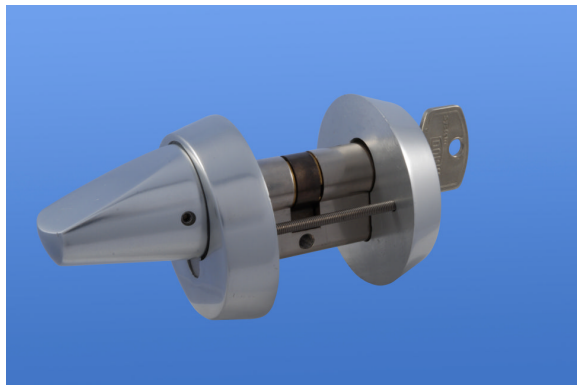
The pulls can be face fixed or back to back and are supplied with tamper resistant fixings.

The pulls have been included in successful indicative fire tests using Lorient Products intumescent pads (available separately).

Finishes: SAA or SSS



Anti-Ligature Hardware



SSAL 51.824. ---

Europrofile master key systems are available with anti barricade clutch thumb turns and bolt fixing escutcheons which minimise ligature risks. Please contact us with details of your requirements.

Finishes: SAA/NP or SSS/NP

SSAL 51.824.512

Coat hook 63mm dia with hook fixed in a ball joint held in place by a spring loaded ball bearing. It will take the weight of a coat but additional weight will cause it to collapse. The spring tension is factory set to 10kg.

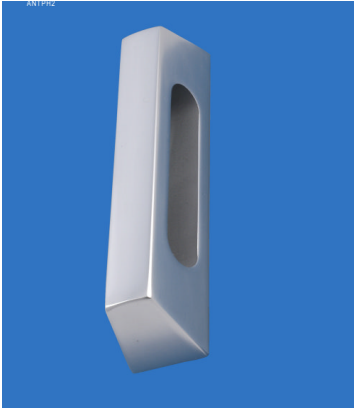
Finishes: SAA or SSS



SSAL 51.824.823

Anti-ligature door stop.

Anti-Ligature Hardware



SSAL 51.824.202

A window pull handle 150x34mm with chamfered sides to prevent ligature attachment.

Finishes: SAA, SSS and crinkle powder coated.

SSAL 51.824.152

Slim line window pull 100x22mm
Can be supplied on back plate for face fixing.

Finishes: SAA, SSS



SSAL 51.824.113

Window pull 150x22mm with key hole to allow the operation of an espagnolette locking system.

Key supplied to suit 7mm square drive espagnolette system.

Finishes: SAA and crinkle powder coat.

Anti-Ligature Hardware

SSAL.51.824.12

Handle for use with espagnolette windows.
The handle is removable and can be kept
on a key ring.
Finishes: SSS only



SSAL 51.824.14

Locking window handle for use with
espagnolette windows. The handle is set in a
ball joint and swings freely on release.
Finishes: SSS only

SSAL 51.824.105

Anti-ligature cockspur with Allen key operation to
suit metal or flush timber windows.

