

# Sliding Door Gear

## Double 60 Wardrobe sliding door gear

FOR TOP HUNG DOORS OPERATING ON A ONE-PIECE DOUBLE TRACK

### APPLICATION

For wardrobes, cupboards and similar doors. Light domestic use, normal handling.

### RANGE

- Maximum door weight 27kg (60lb).
- Maximum door height 2m (6ft 6ins).
- Maximum door width 1m (3ft 3ins).

### DOOR CONSTRUCTION

Door thickness 22 to 35mm. Frame width 30mm minimum to accommodate hanger aprons. Door width one quarter height minimum, handle height two thirds from bottom for best results.

### FIXING

Soffit fixed, one piece double top track. Fixed track centres need adjustable gaps between doors. Bottom guides recessed or proud. Position hangers close to edge of doors.

### HANGERS

Nylon wheels, steel axles, plated steel adjustable aprons.

### TOP TRACK

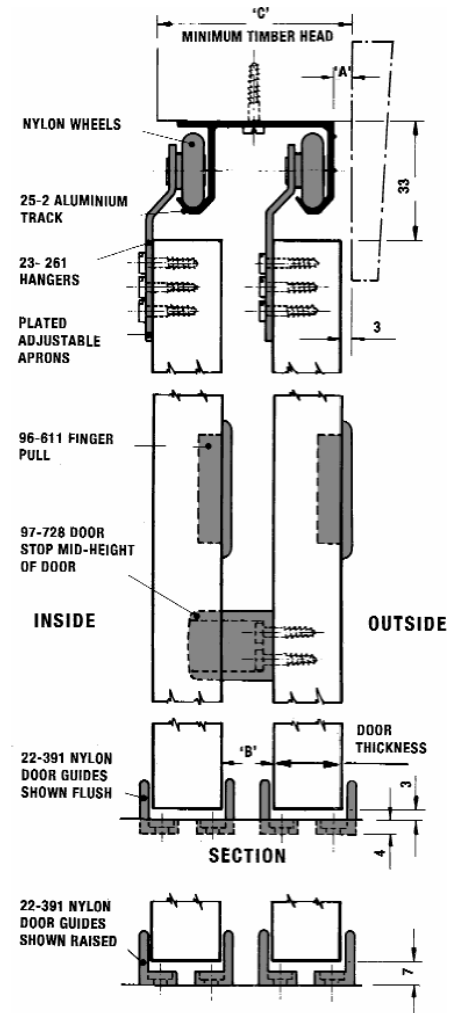
Aluminium drilled for soffit fixing.

**BOTTOM GUIDES** Nylon, woodscrew fixing.

**DOORSTOP** 97-728 Nylon.

### Finger Pull

95-611 White plastic, size 32mm diameter, 8mm deep.



DOOR THICKNESS	DIM 'A'	DIM 'B'	DIM 'C'
35	22.5	6.5	76
32	19.5	9.5	73
28	14.5	13.5	68
25	11.5	16.5	65
22	8.5	19.5	62



10-1

# Sliding Door Gear

## Double 60X Wardrobe Sliding door gear

### FOR EXTRA THICK DOORS OPERATING ON A ONE-PIECE DOUBLE TOP TRACK APPLICATION

For wardrobes and cupboards using standard flush doors of light weight construction.

### RANGE

- Maximum door weight 27kg (60lb).
- Maximum door height 2m (6ft 6ins).
- Maximum door width 1m (3ft 3ins).

### DOOR CONSTRUCTION

Door thickness between 36 to 44mm. Minimum frame width 30mm to accommodate hanger aprons. Door width should not be less than one quarter height. Recommended handle height two thirds from bottom of door for best results.

### FIXING

Soffit fixed, one piece double top track. Fixed track centres need adjustable gaps between doors. Bottom guides recessed or proud. Position hangers close to edge of doors.

### HANGERS

Nylon wheels, ground steel axles, plated steel , adjustable aprons.

### SINGLE DOOR COMPONENT PACK 1TD

Comprising all necessary hangers, guides, finger pulls, door stop and screws for one door.

### TOP TRACK

Aluminium drilled for soffit fixing

### BOTTOM GUIDES

Nylon, woodscrew fixing.

**DOORSTOP** 97-728 Nylon.

### FINGER PULL

95-611 White plastic, size 32mm diameter diameter, 8mm deep.

### STANDARD TRACKSETS

#### SET 4DX

For two doors within 1.2m opening

#### SET 5DX

For two doors within 1.5m opening.

#### SET 6DX

For two doors within 1.8m opening

#### SET 8DX

For three doors within 2.4m opening.  
Contents per set: 1 length of double one-piece aluminium top track, door hangers nylon guides, finger pulls, door stops and all screws

# Sliding Door Gear

## Twin 60 & Single 60 Wardrobe Sliding Door Gear

### Application

Top hung system for wardrobes, cupboards and similar doors single or multiple runs of track  
Light domestic use, normal handling

### RANGE

- Maximum door weight 27kg (60lb).
- Maximum door height 2m (6ft 6ins).

Maximum door width 1m (3ft 3ins).

### DOOR CONSTRUCTION

Door thickness 16 to 40mm. Frame width 30mm minimum to accommodate hanger aprons.

Door width one quarter height

### FOR CUPBOARD OR WARDROBE DOORS

minimum, handle height two thirds from bottom for best results.

### FIXING

Top track soffit fixed. Individual tracks allow for variation of door thickness. Guides at floor level recessed or proud.

Position hanger close to edge of doors.

### HANGERS

Nylon wheels, ground steel axles, plated steel adjustable aprons.

### TOP TRACK

23-2 Aluminium drilled for soffit fixing.  
Lengths 1.2m to 2.4m.

### Bottom Guides

Nylon woodscrew fixing

### Door stop

97-728 nylon

### FINGER PULL

95-611 White plastic, size 32mm diameter, 8mm deep

### STANDARD TRACKSETS

#### SINGLE 60

**SET 4S** – For one door  
600mm opening

**SET 5S**– For one door  
750mm opening

**SET 6S**– For one door  
900mm opening

Contents per set: 1 length of top track, 2 hangers, nylon guides, finger pull and all screws

#### TWIN 60

**SET 4T** – For two doors within  
1.2m opening.

**SET 5T** – For two doors within  
1.5m opening.

**SET 6T** – For two doors within  
1.8m opening.

**SET 8T** – For three doors within  
2.4m opening.

Contents per set: 2 lengths of top track, hangers, nylon guides, finger pulls, door stops and screws.

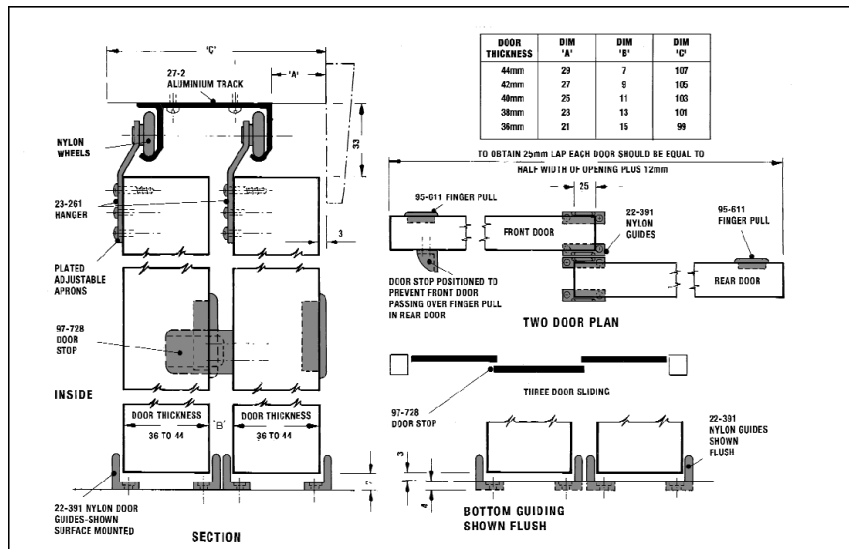
Comprising all necessary hangers, guides, finger pull, door stop and screws for one door.

### TOP TRACK

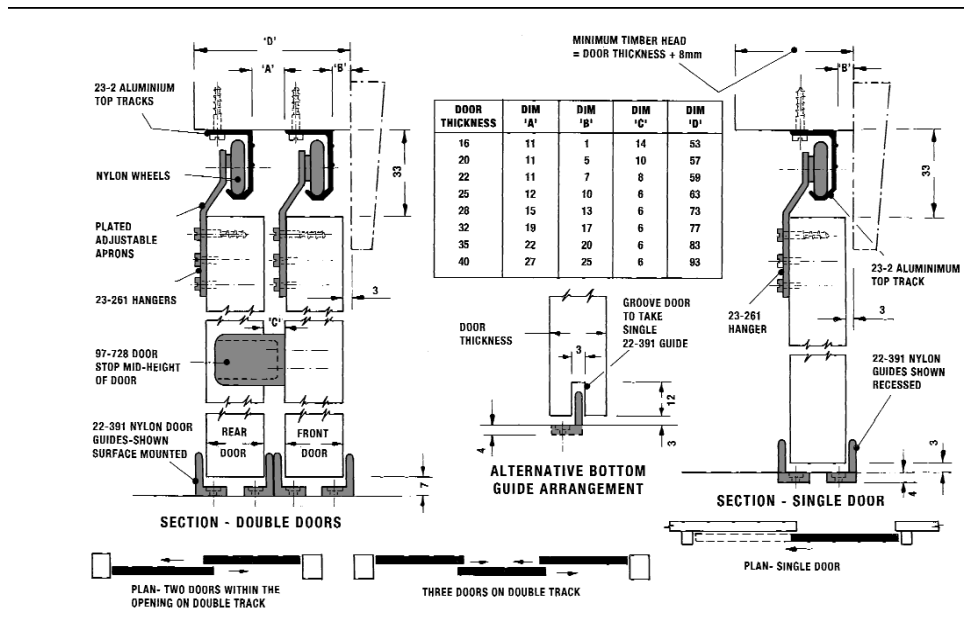
Available in 1.2, 1.5, 1.8 and 2.4m lengths.

# Sliding Door Gear

## Double 60X Wardrobe Sliding Door Gear



## Twin 60 & Single 60 Sliding Door Gear



# Sliding Door Gear

## Twin 100 Wardrobe Sliding Door Gear

### WITH TWIN PARALLEL TRACKS

#### APPLICATION

Top hung system for wardrobes, cupboards and similar doors. Single or multiple runs of track. Heavy public use.

#### RANGE

Maximum door weight 45kg (100lb).

Maximum door height 2.1m (7ft).

Maximum door width 1.2m (4ft).

#### DOOR CONSTRUCTION

Door thickness 20 to 40mm. Frame width 38mm minimum to accommodate hanger aprons. Door width quarter height minimum, handle height two thirds from bottom for best results.

#### FIXING

Top track soffit fixed. Individual tracks

allow for variation of door thickness.

Guides at floor level recessed or proud.

On treble track installations floor channel should be used as shown.

Position hangers close to edge of door.

#### HANGERS

Nylon wheels, ground steel axles, plated steel

adjustable aprons.

#### TOP TRACK

26-2 Aluminium, drilled for soffit fixing.

Lengths 1.8m and 2.4m.

### BOTTOM GUIDES

Nylon fixed with woodscrews.

#### ALTERNATIVE BOTTOM GUIDING

Groove bottom of door for 42-1 Channel

And position 42-371 Nylon guide at centre

#### DOOR STOP

97-726 Nylon with rubber buffer.

#### HANDLE

95-617 Flush handle size 100 x 50mm.

#### STANDARD TRACKSETS

**SET 6H** – For two doors within

1.8m opening

**SET 8H** – For three doors (2 front 1 rear)

within 2.4m opening.

Contents per set: 2 lengths of top track,

hangers, nylon guides, door stop &

all screws for doors on parallel tracks.

#### SINGLE DOOR COMPONENT PACK 1 H

Comprising all necessary hangers, guides,

door stop and screws for one front door

or Single 100 application. Rear door

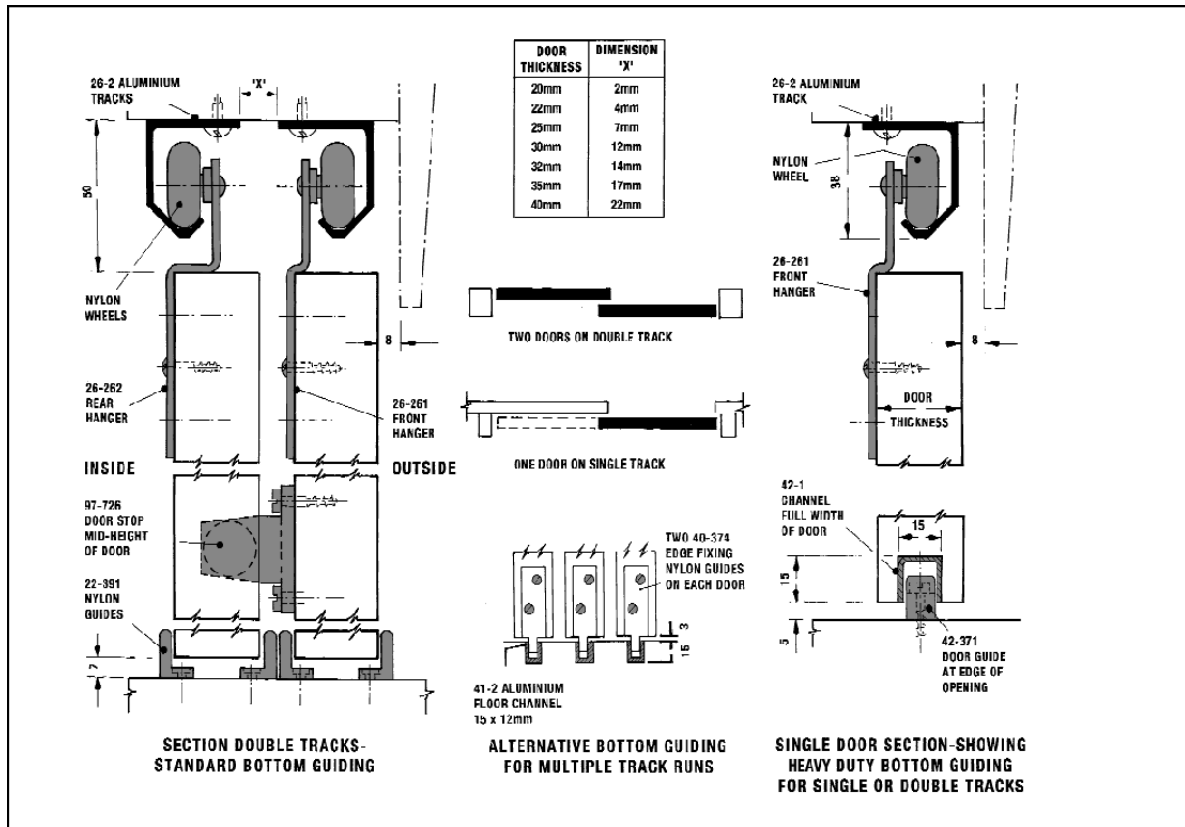
components available on request.

#### TOP TRACK

Available in 1.8m and 2.4m lengths.

# Sliding Door Gear

## Twin 100 Wardrobe Sliding Door Gear



## Twin-Fold Folding Door Gear

Full details available on request

# Sliding Door Gear

## Flyaside Panther Sliding Door Gear

### OPERATING ON THE CAGED BALL RUNNER PRINCIPLE

#### APPLICATION

Internal straight sliding door gear for houses, offices, schools etc.

For sturdy reliable operation.

#### RANGE

- Maximum door weight 55kg (120lb).
- Maximum door height 2.4m (8ft).
- Maximum door width 1500mm (5ft).

#### DOOR CONSTRUCTION

Door thickness 30 to 44mm. Drawing shows how standard doors can be used to achieve an evenly balanced elevation from both sides. Standard sets cater for doors up to

1500mm wide – See schedule below.

#### FIXING

Top track side fixed. For soffit fixing use soffit fixing brackets. Single screw fixed guides on floor keep threshold clear. Not suitable for self-closing doors. Vertical and lateral adjustment. For cavities, use Straightaway 100 Gear (see page 20) or a Hideaway Pocket Door Kit. Use two sets for bi-parting doors.

### PRINCIPLE

Linear motion provided by a sliding inner bar supported by a double row of chrome balls running between a vee section outer member.

#### OUTER TRACK

Galvanised steel drilled and c/sk for screws

#### INNER TRACK

Aluminium

#### BALL CAGE

Galvanised steel strip ball retainer.  
Chrome steel balls

#### PENDANT BRACKETS

Steel, open slot for lateral adjustment & removal of door.

#### DOOR PLATES

Steel, zinc plated, steel pendant bolts give vertical adjustment

#### DOOR CHANNEL

Galvanised steel, drilled and c/sk for wood.

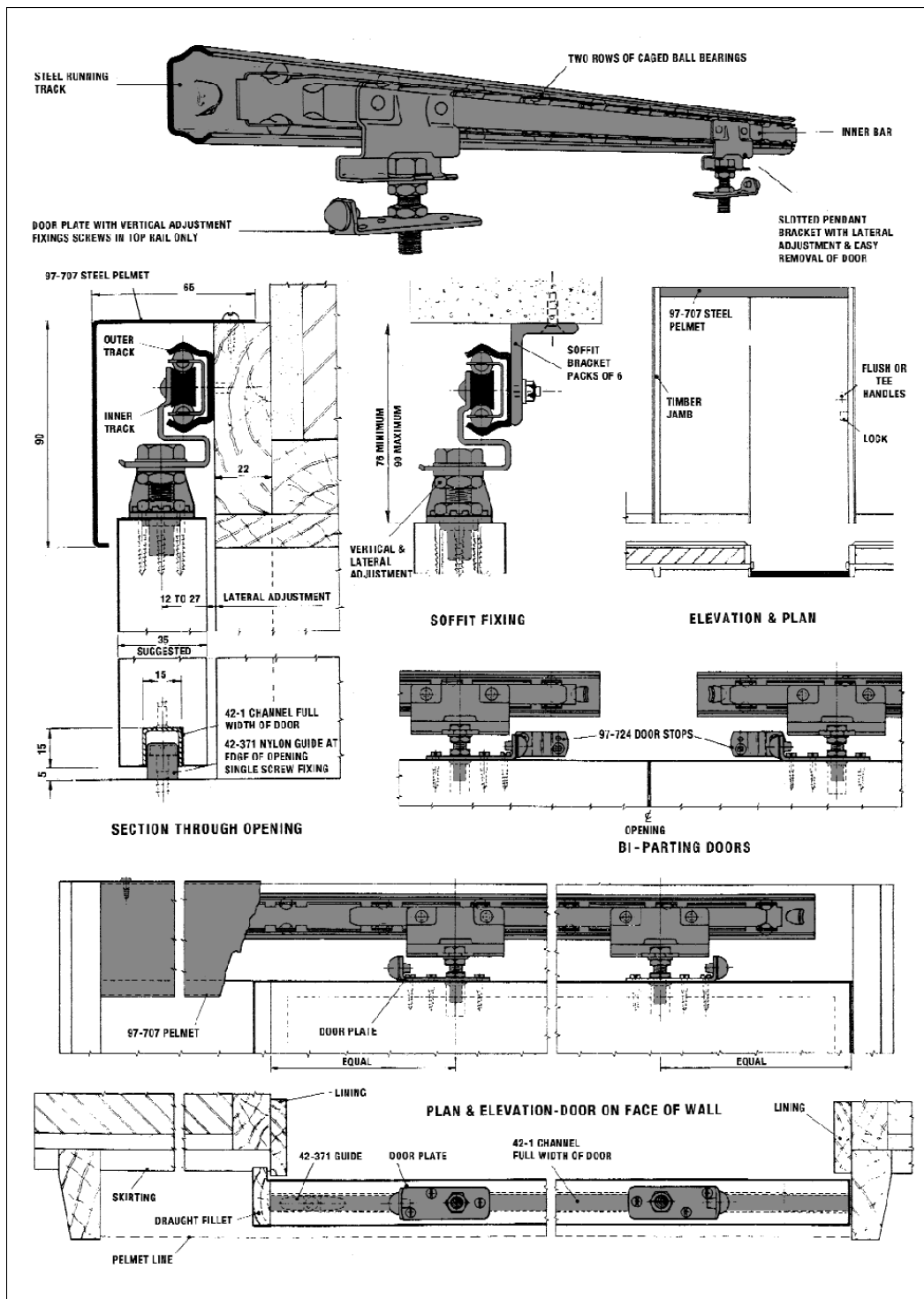
#### FLOOR GUIDE

Nylon, single screw fixing

#### SIMULTANEOUS OPERATION OF 2 DOORS

Can be achieved by using Coburn Simultaneous Operator – catalogue no. 62100.

# Sliding Door Gear





# Sliding Door Gear

## The Hideaway™

### Pocket Door Kit

For interior sliding doors into a “pocket”

Within the wall.

#### APPLICATION

The HIDEAWAY™ Pocket Door Frame Kit is a simple way to increase space in many domestic applications, particularly to dining rooms, en-suite bathrooms, cloakrooms and doors into kitchens

#### CONSTRUCTION

The HIDEAWAY™ Pocket Door Frame Kit is manufactured to a finished thickness of 90mm to suit doors up to 35mm. When the kit is to be used in a run of other studwork, it is important that this is erected to an equivalent thickness or that the plasterwork fixed to the frame is packed as required.

If a finished thickness of 100mm is required or if the

Door is between 35–44mm, the HIDEAWAY™ frame Adaptor kit provided should be used. For doors between 45mm and 50mm, a Cavity Widening Kit or Cavity Widening Plates are required. Please consult Security and Sign for details.

#### COMPONENTS

HIDEAWAY™ Pocket Door Frame Kits are supplied with all components marked in green on the following page.

These are: Header assembly, 4 steel wrapped studs, (6 with H42)

2 Stud foot brackets (3 with H42),

2x3 wheel hangers

2 Hanger mounting plates

1 Rubber door stop

2 Nylon door guides, screws

installation instructions, spanner

HIDEAWAY™ adaptor kit

RANGE					
	door width	height	thickness without adaptor    with adaptor	weight	with 2x12.5mm wall boards
H30	760mm	2032mm	35mm 44mm	56kg	115mm
H36	915mm	2032mm	35mm 44mm	56kg	115mm
H42	1067mm	2032mm	35mm 44mm	56kg	115mm



Conventional door

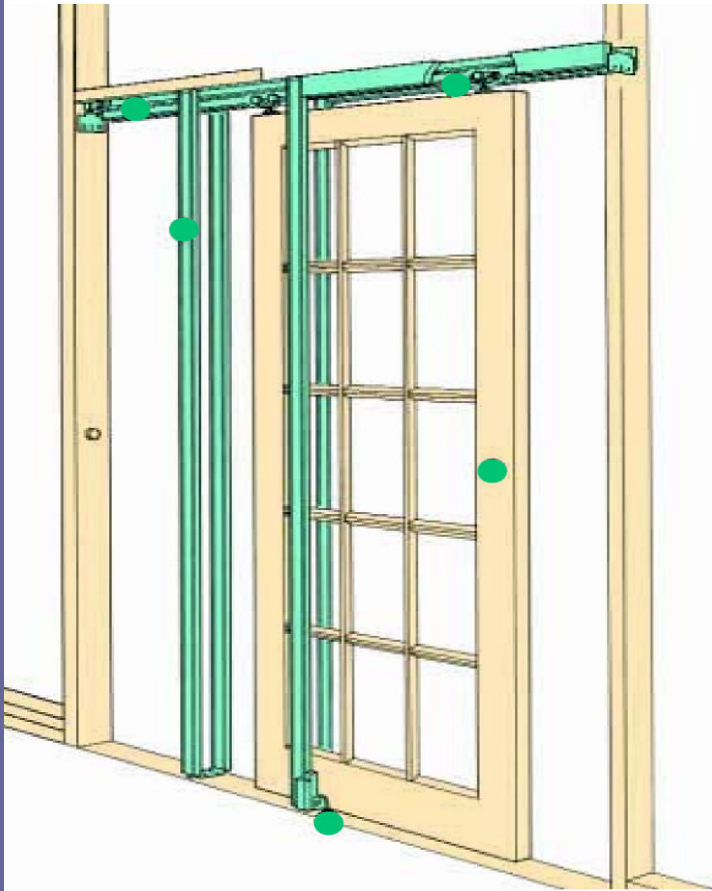


Hideaway™

Pocket Door



# Sliding Door Gear



**Steel wrapped studs** nailed to the pre-assembled header give maximum rigidity and restrict accidental nail penetration



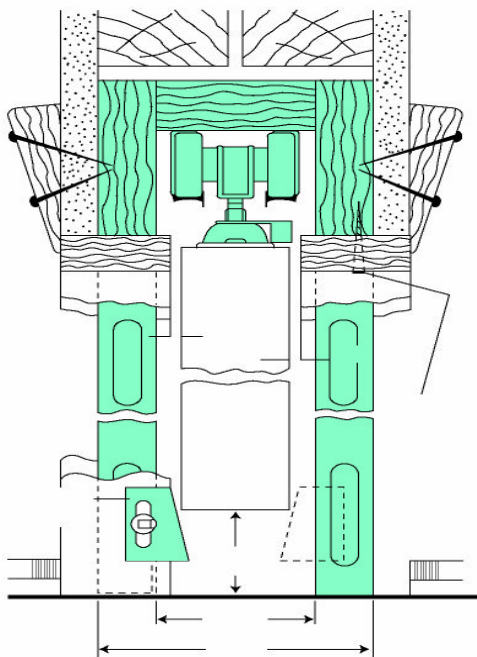
**Keyhole slots** in the aluminium box section track allow easy removal



**Self adjusting Floor plates**  
Long vertical fingers slide into the studs allowing for floor settlement.



**Unique hanger locking clip** allows exceptionally easy fitting and removal of the door from the hanger and keeps it secure during operation



## BI-PARTING DOORS

Where 2 converging doors are to be fitted a HIDEAWAY™ Jointing Kit should be used with 2 HIDEAWAY™ Pocket Door Frame Kits

## AUTOMATIC OPERATION

If automatic operation of the HIDEAWAY™ Pocket Door is required this can be done. Please contact Security and Sign for details

## Building Regulations-Approved Document Part M

The NHBC has confirmed that \ door system such as the HIDEAWAY™ Pocket door provides a compliant means of access for toilets and bathrooms under Approved Document M of the Building Regulations

# Sliding Door Gear

## Commercial sliding Door Gear

We offer a wide range of commercial Straight Sliding, Folding, Round the Corner, and Glass Door Sliding equipment. This complex area of door gear is too large to include in this catalogue. Please contact **Security and Sign Services** with your requirements to enable us to identify the correct range and specification for your project.

